

# Advantage: Cat

Cat® **249D3/259D3/279D3/289D3 Compact Track Loader** vs.  
Kubota **SVL65-2/SVL75-2 Compact Track Loader**



	CAT:	KUBOTA:
OPERATOR STATION	<ul style="list-style-type: none"> <li>• Modular one-piece sealed and pressurized cab for cleaner, quieter working environment</li> <li>• Balanced HVAC airflow throughout cab</li> <li>• Available air suspension, high back seat, heated with lumbar support and independently adjustable arm bars for operator comfort</li> <li>• Standard, electro-hydraulic joysticks enable creep mode as well as adjustable drive and implement response</li> <li>• Standard rearview mirror</li> </ul>	<ul style="list-style-type: none"> <li>• Two piece cab design. Relies on foam seals to join the two sections.</li> <li>• HVAC vents only located on left side of cab resulting in uneven airflow distribution</li> <li>• Available air suspension, high back seat; does not include heat, lumbar support or independently adjustable arm bars</li> <li>• Pilot control design prohibits operator adjustment of drive and implement response; no creep mode capability</li> <li>• Optional rearview mirror</li> </ul>
UNDERCARRIAGE	<ul style="list-style-type: none"> <li>• Standard fully suspended undercarriage design results in a smoother ride that also provides increased material retention, traction, flotation, and usable speed</li> </ul>	<ul style="list-style-type: none"> <li>• Standard rigid mounted undercarriage design incorporates a roller frame welded to the chassis that does not offer any of the benefits realized with a fully suspended undercarriage</li> </ul>
IN CAB DISPLAY	<ul style="list-style-type: none"> <li>• Anti-theft system, Standard</li> <li>• Standard 127 mm (5 inch) full color display (Option 249D3)</li> <li>• Ability to store up to 50 security/user profiles</li> <li>• Standard integrated rearview camera</li> <li>• Up to sixteen customizable machine parameters</li> </ul>	<ul style="list-style-type: none"> <li>• No anti-theft system</li> <li>• No option for advanced display, features or controls</li> <li>• No factory rearview camera option</li> <li>• Rear quarter visibility obscured by lift arm structure</li> </ul>
SERVICEABILITY	<p><i>No tools required to access routine maintenance items:</i></p> <ul style="list-style-type: none"> <li>• Easy access to the hydraulic oil filter, hydraulic oil fill with adjacent sight gauge, engine oil fill, fuel filter, etc.</li> <li>• 6,000 hour (maximum) hydraulic oil change interval; reduces owning and operating costs</li> <li>• Anti-cavitation hydraulic tank aids in heat dissipation</li> <li>• Component layout under cab is orderly and spacious with contrasting color for easy inspection</li> <li>• Easy access to engine air filter element for cleaning or replacement</li> </ul>	<p><i>Requires multiple tools to gain access to routine maintenance items:</i></p> <ul style="list-style-type: none"> <li>• Hydraulic oil filter access requires lifting of the cab</li> <li>• Fuel filter and engine oil filter requires removal of bolts to tilt cooler away to gain access</li> <li>• Hydraulic oil top off requires tool to remove fill cap; sight gauge not visible</li> <li>• Due to proximity to the cooling package, engine air filter element can be difficult to access for cleaning or replacement</li> <li>• 1,000 hours hydraulic oil change interval per Operation and Maintenance Manual (OMM)</li> <li>• Component Layout under cab is dark colored and appears cluttered which may create a more difficult inspection</li> </ul>
POWER TRAIN AND COOLING	<p><i>Efficient hydraulically driven 'on-demand' cooling fan:</i></p> <ul style="list-style-type: none"> <li>• Optimizes machine cooling independent of engine speed while reducing noise, improving fuel efficiency and heater performance in cold temperatures</li> <li>• To aid customers in high debris applications, the optional reversing fan maximizes cooling airflow by removing material from the rear door intake screen (not available on 249D3)</li> <li>• Optional speed sensitive ride control engages automatically to provide better material retention and operator comfort</li> </ul>	<p><i>Crankshaft driven cooling fan:</i></p> <ul style="list-style-type: none"> <li>• Fan speed tied to engine RPM; airflow reduced when engine is under heavy load</li> <li>• Maximum cooling airflow requires maximum engine RPM</li> <li>• Ride control is not available on Kubota Compact Track Loaders</li> <li>• No factory options for reversing fan or other high debris segment solutions</li> </ul>

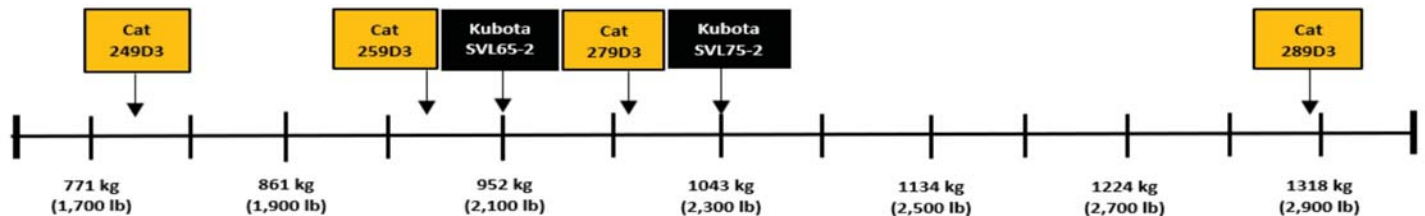
## Advantage: Cat

Cat® 249D3/259D3/279D3/289D3 Compact Track Loader vs. Kubota SVL65-2/SVL75-2 Compact Track Loader

### Specifications

	Cat 249D3	Cat 259D3	Kubota SVL65-2	Cat 279D3	Kubota SVL75-2	Cat 289D3
<b>GROSS POWER – kW (hp)</b>	50.1 (67.1)	55.4 (74.3)	51.0 (68.3)	55.4 (74.3)	55.4 (74.3)	55.4 (74.3)
<b>ROC @ 35% – kg (lb)</b>	791 (1,740)	914 (2,010)	953 (2,100)	1009 (2,220)	1043 (2,300)	1314 (2,890)
<b>OPERATING WEIGHT – kg (lb)</b>	3560 (7,831)	4085 (8,987)	3645 (8,035)	4589 (10,095)	4100 (9,039)	4858 (10,688)
<b>TRAVEL SPEED – km/h (mph)</b>						
<b>ONE SPEED</b>	8.1 (5.0)	9.5 (5.9)	7.8 (4.9)	7.2 (4.5)	7.5 (4.7)	7.2 (4.5)
<b>TWO SPEED</b>	12.2 (7.6)	13.7 (8.5)	11.5 (7.1)	13.3 (8.3)	11.5 (7.1)	13.3 (8.3)
<b>BUCKET PIN HIGHT – mm (in)</b>	3002 (118.2)	3075 (121.0)	3010 (118.5)	3173 (124.9)	3025 (119.1)	3178 (125.1)
<b>MAXIMUM DUMP ANGLE</b>	48°	52°	40°	39°	40°	51°
<b>AUXILIARY PRESSURE – kPa (psi)</b>						
<b>STANDARD FLOW</b>	23 000 (3,336)	23 000 (3,336)	22 497 (3,263)	23 000 (3,336)	21 960 (3,185)	23 000 (3,336)
<b>HIGH FLOW</b>	23 000 (3,336)	23 000 (3,336)	22 497 (3,263)	28 000 (4,061)	21 960 (3,185)	28 000 (4,061)
<b>AUXILIARY FLOW – L/min (gal/min)</b>						
<b>STANDARD FLOW</b>	69 (18)	76 (20)	65.8 (17.4)	86 (23.0)	66 (17.4)	86 (23.0)
<b>HIGH FLOW</b>	99 (26)	112 (30)	102.2 (27.0)	121 (32.0)	110.9 (29.3)	121 (32.0)
<b>LENGTH OF TRACK ON GROUND – mm (in)</b>	1384 (54.5)	1499 (59.0)	1470 (57.9)	1630 (64.2)	1436 (56.5)	1630 (64.2)
<b>TRACK WIDTH – mm (in)</b>						
<b>NARROW</b>	320 (12.6)	320 (12.6)	320 (12.6)	400 (15.7)	320 (12.6)	400 (15.7)
<b>WIDE</b>	400 (15.7)	400 (15.7)	380 (15.0)	450 (17.7)	380 (15.0)	450 (17.7)
<b>GROUND PRESSURE – kPa (psi)</b>						
<b>NARROW</b>	38.6 (5.6)	41.1 (6.0)	34.4 (5.0)	33.9 ( 4.9)	38.6 (5.6)	35.8 (5.2)
<b>WIDE</b>	31.7 (4.6)	33.4 (4.8)	29.0 (4.2)	30.0 ( 4.4)	32.4 (4.7)	31.5 (4.6)

### Model Comparison



### Cat Advantage: Rearview Visibility and Exhaust Airflow

#### Cat:

- Cat engine exhaust mixes with cooling pack airflow and is directed up and away from people and objects; this allows the DPF cleaning cycle to occur safely without the need to relocate the machine away from people and work area.

#### Kubota:

- Kubota's hot engine exhaust and cooling pack airflow exits the machine at ground level closer to people and objects. Operator should postpone cleaning or relocate machine away from people and work area during a cleaning cycle of the DPF due to potential hazard caused by extreme temperatures.