



CAT 303.5 MINI EXCAVATORS

INSPECTION DETAILS

Inspection Type	Marketing
Inspection Form	Standard
Inspection #	10110141
Inspection Status	Completed
Created	04/03/24 10:57:44
Updated	04/22/24 13:43:09
Created By	Aldridge, Jimmy
Inspector	Aldridge, Jimmy
Salesperson	Mcloughlin, Calum A.
Serial #	JWY03114
SMU / Hours	698
Location	Dacula, GA, United States



CLIENT DETAILS

Name	
Company	Cat Financial
Address	
City	
State	Georgia
Country	United States
Postal Code	
Email	
Phone	

FEATURES

General

- Auxiliary Hydraulics Pressure - High Pressure
- Coupler - Quick
- Coupler Type - Mechanical

CONDITION

●●● Good

●● Fair

● Poor

Approved Repair

GENERAL CONDITION

Body



Frame



General



ET Product Status Report
Download
YES

Machine Starts and is Operable
YES

GENERAL APPEARANCE

Car Body



Counterweight



Crankcase Guard / Battery Box



Decals



Draw Bar



Eng. Enclose Hood / Stack



Engine Doors



Fuel Tank



Grab Irons



Main Frame Welds



Paint



Plastic



Radiator Grill & Shroud



Sheet Metal



Cleaning Required
YES

S.O.S. Taken
NO

SAFETY ITEMS

Horn



Swing Brake



ROPS
YES

Safety Decals In Place
YES

Safety Decals Legible
YES

OPERATOR STATION

Dash Console



EMS Panel / Warnings



Floor Boards



Gauges



Meter



Seat Belt



Seat Cushion / Arm Rest



Switches



Back Up Alarm
YES

ROPS Certification Plate
YES

ENGINE

Belts / Pulleys



Engine Oil Filter Condition /
Service Hours



Engine Oil Level / Condition



Engine Supports / Mounts



Exhaust / Muffler / Stack



Fuel Injection System



Governor



Intake / Air Filters



Operating Condition



Blow By
NO

Fuel Leaks
NO

Knocking
NO

Oil Leaks
NO

Water in Oil
NO

COOLING SYSTEM

Anti-Freeze Level / Color /
Condition



Coolers



Fan



Fan Shrouds / Guards



Hoses / Tubes



Radiator



Water Pump
●●●

Compression in Radiator
NO

Coolant Leaks
NO

Oil in Anti-Freeze
NO

Standard Radiator
YES

ELECTRICAL, STARTING AND CHARGING SYSTEM

Alternator
●●●

Batteries / Cables
●●●

Lighting
●●●

Starter
●●●

Wiring
●●●

HYDRAULICS

Boom Cylinder
●●●

Bucket Cylinder
●●●

Control Linkage
●●●

Filter Condition (CUT)
●●●

Hose Lines
●●●

Operating Condition -
HYDRAULICS
●●●

Pump Drive
●●●

Pumps & Valves
●●●

Stick Cylinder
●●●

Swing Gear
●●●

Swing Motors
●●●

Tank
●●●



Travel Motors
●●●

ATTACHMENTS / WORK TOOLS

Other



BOOM

Boom Condition
●●●

Boom Pins
●●●

Pins & Bushings - BOOM
●●●

STICK

Pins & Bushings - STICK
●●●

Stick Conditions
●●●

Stick Pins
●●●

BUCKET

Bucket Bottom
●●●

Bucket Linkage
●●●

Bucket Mounts
●●●

Bucket Sides
●●●

Cutting Edges
●●●

Teeth / Adapters
●●●

Quick Coupler
YES

Brand

Quick Coupler (Make/Model)



Width

UNDERCARRIAGE

	Measurement (L)	% Worn (L)	Total Potential Hours (L)	Measurement (R)	% Worn (R)	Total Potential Hours (R)
Carrier Rollers Front	Normal wear			Normal wear		
Carrier Rollers Rear	N/A			N/A		
Idlers Front	Normal wear			Normal wear		
Idlers Rear	N/A			N/A		
Links	N/A			N/A		
Pins & Bushings (External)	N/A			N/A		
Pins & Bushings (Internal)	N/A			N/A		
Segments	Normal wear			Normal wear		

Track Roller 1	Normal wear	Normal wear
Track Roller 10	N/A	N/A
Track Roller 11	N/A	N/A
Track Roller 12	N/A	N/A
Track Roller 2	Normal wear	Normal wear
Track Roller 3	Normal wear	Normal wear
Track Roller 4	Normal wear	Normal wear
Track Roller 5	N/A	N/A
Track Roller 6	N/A	N/A
Track Roller 7	N/A	N/A
Track Roller 8	N/A	N/A
Track Roller 9	N/A	N/A
Track Shoes (Width)	N/A	N/A

Track Frame - Left
●●●

Track Frame - Right
●●●

COMMENTS, MISC. REPAIRS, GENERAL REMARKS

comment 2

MARKETING PHOTOS (19)







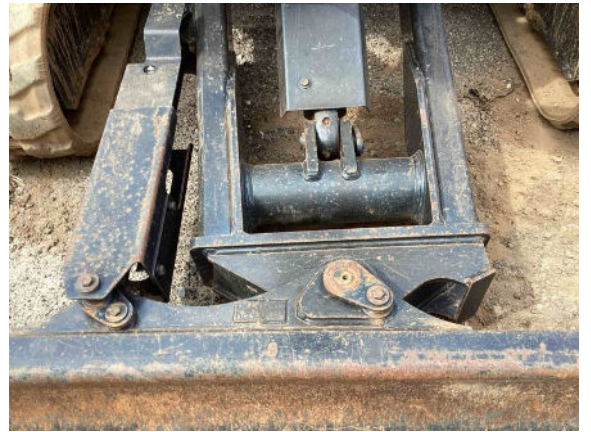


LINE ITEM PHOTOS (8)

Tank
●●●



Other



Quick Coupler (Make/Model)



TRADE WORKSHEET**Humphries, Robert****ASKING PRICE** USD**TARGET SELLING PRICE****MARGIN / MARKUP** 0.0 %

REPAIR CHARGES SUBTOTAL 0**CLEANING****PAINTING****FREIGHT****OTHER CHARGES SUBTOTAL****MANAGER'S ADJUSTMENT CHARGE**

TOTAL COST 0**TOTAL CHARGES** 0

ASSIGNED TRADE VALUE 0 USD**FINAL PRICE** USD**NOTES**

^ indicates the latest assigned trade value.