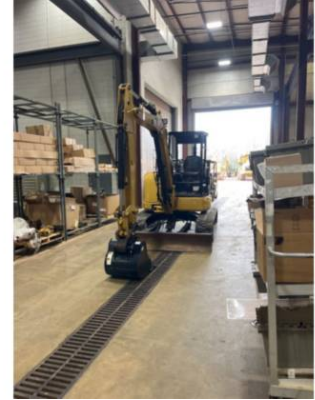




2018 CAT 305E2CR TRACK EXCAVATORS

INSPECTION DETAILS

Inspection Type	Marketing
Inspection Form	Standard
Inspection #	10049190
Inspection Status	Completed
Created	06/29/23 11:28:41
Updated	04/23/24 14:26:49
Created By	Aldridge, Jimmy
Inspector	Aldridge, Jimmy
Reviewers	Aldridge, Jimmy; Mcloughlin, Calum A.
Salesperson	Mcloughlin, Calum A.
Serial #	H5M06084
SMU / Hours	1,154
Location	Dacula, GA, United States



CLIENT DETAILS

Name	
Company	Cat Financial
Address	
City	
State	Georgia
Country	United States
Postal Code	
Email	
Phone	

FEATURES

General

- AUXILIARY HYDRAULICS
- BOOM, 1 PIECE
- CARBODY, STANDARD
- COUPLER, QUICK
- ENGINE ENCLOSURES
- HAND AND FOOT CONTROL
- LIGHTING
- PILOT CONTROL
- RUBBER TRACK
- ULTRA LOW SULFUR DIESEL FUEL

CONDITION

●●● Good

●● Fair

● Poor

Approved Repair

GENERAL APPEARANCE

Car Body



Counterweight



Crankcase Guard / Battery Box



Draw Bar



Eng. Enclose Hood / Stack



Engine Doors



Fenders



Fuel Tank



Grab Irons



Hood



Main Frame Welds



Paint



Radiator Grill & Shroud



Sheet Metal



SAFETY ITEMS

Horn



Swing Brake



ROPS
YES

Safety Decals In Place
YES

Safety Decals Legible
YES

GAUGES, OPERATOR STATION, CONSOLE

Dash Console



EMS Panel / Warnings



Floor Boards



Gauges



Meter



Seat Belt



Seat Cushion / Arm Rest



Switches



Back Up Alarm
YES

ROPS Certification Plate
YES

Fuel Level

ENGINE

Air Cleaners
●●●

Belts / Pulleys
●●●

Engine Supports
●●●

Exhaust / Muffler
●●●

Fuel Injection System
●●●

Oil Filter Condition (CUT)
●●●

Operating Condition - ENGINE
●●●

Blow By
NO

Compression in Radiator
NO

Fluid Levels OK?
YES

Knocking
NO

Oil Leaks
NO

Water in Oil
NO

COOLING SYSTEM

Coolers
●●●

Fan
●●●

Fan Drive
●●●

Hoses
●●●

Radiator
●●●

Water Pump
●●●

Leaks
NO

ELECTRICAL, STARTING AND CHARGING SYSTEM

Alternator
●●●

Batteries / Cables
●●●

Lighting
●●●

Starter
●●●

Wiring
●●●

HYDRAULICS

Boom Cylinder



Bucket Cylinder



Control Linkage



Filter Condition (CUT)



Hose Lines



Operating Condition -
HYDRAULICS



Pump Drive



Pumps & Valves



Stick Cylinder



Swing Gear



Swing Motors



Tank



Travel Motors



ATTACHMENTS / WORK TOOLS

Other



BOOM

Boom Condition



Boom Pins



Pins & Bushings - BOOM



STICK

Pins & Bushings - STICK



Stick Conditions



Stick Pins



BUCKET

Bucket Bottom



Bucket Linkage



Bucket Mounts



Bucket Sides



Cutting Edges



Teeth / Adapters




Quick Coupler
YES


Brand Quick Coupler (Make/Model) Width

UNDERCARRIAGE

	Measurement (L)	% Worn (L)	Total Potential Hours (L)	Measurement (R)	% Worn (R)	Total Potential Hours (R)
Carrier Rollers Front	Normal wear			Normal wear		
Carrier Rollers Rear	N/A			N/A		
Idlers Front	Normal wear			Normal wear		
Idlers Rear	N/A			N/A		
Links	N/A			N/A		
Pins & Bushings (External)	N/A			N/A		
Pins & Bushings (Internal)	N/A			N/A		
Segments	Normal wear			Normal wear		
Track Roller 1	Normal wear			Normal wear		
Track Roller 10	N/A			N/A		
Track Roller 11	N/A			N/A		
Track Roller 12	N/A			N/A		
Track Roller 2	Normal wear			Normal wear		
Track Roller 3	Normal wear			Normal wear		
Track Roller 4	Normal wear			Normal wear		
Track Roller 5	N/A			N/A		

Track Roller 6	N/A	N/A
Track Roller 7	N/A	N/A
Track Roller 8	N/A	N/A
Track Roller 9	N/A	N/A
Track Shoes (Width)	Tracks 16" wide	Tracks 16" wide


Track Frame - Left


Track Frame - Right


Pins & Bushings Turned?
NO

FINAL DRIVES

Housings


Planetaries / Diff


MARKETING PHOTOS (9)





LINE ITEM PHOTOS (6)

Other

